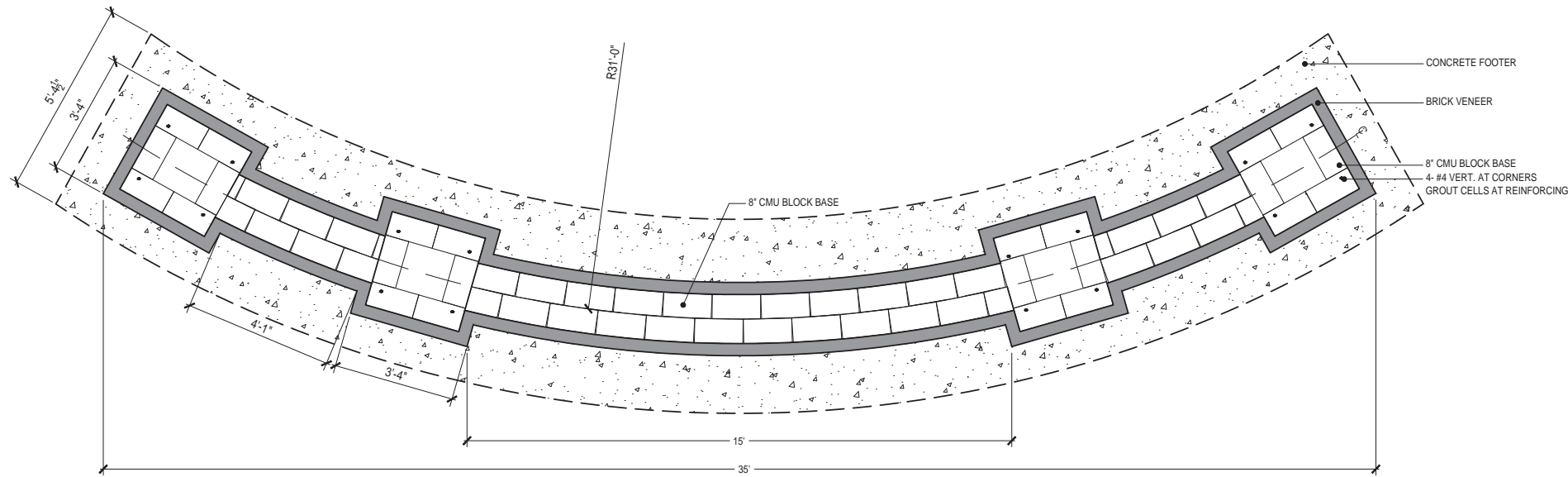
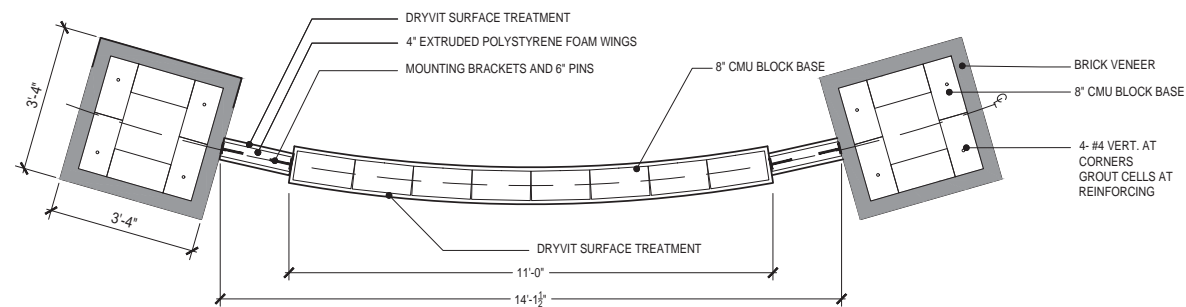


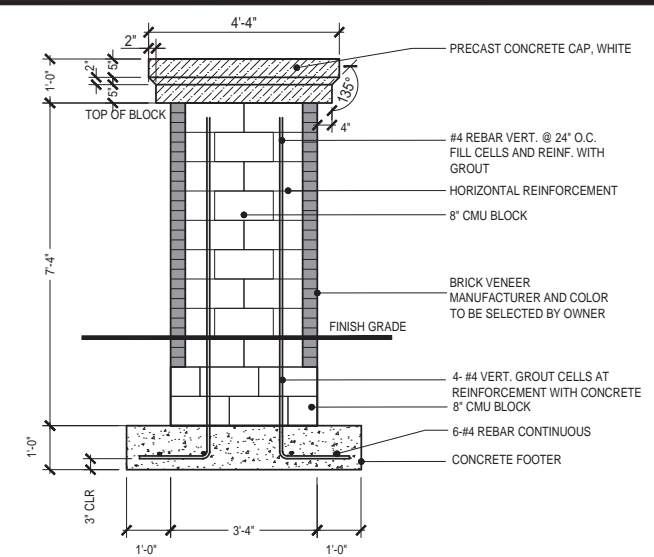
4 GATEWAY SIGN
 $\frac{1}{2}'' = 1'$



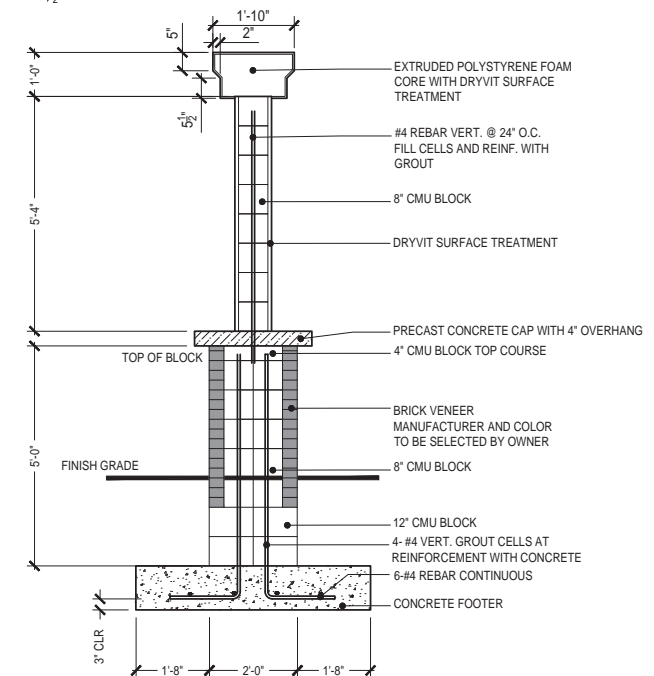
4A GATEWAY SIGN - SECTION A
 $\frac{1}{2}'' = 1'$



4B GATEWAY SIGN - SECTION B
 $\frac{1}{2}'' = 1'$



4C GATEWAY SIGN - SECTION C
 $\frac{1}{2}'' = 1'$

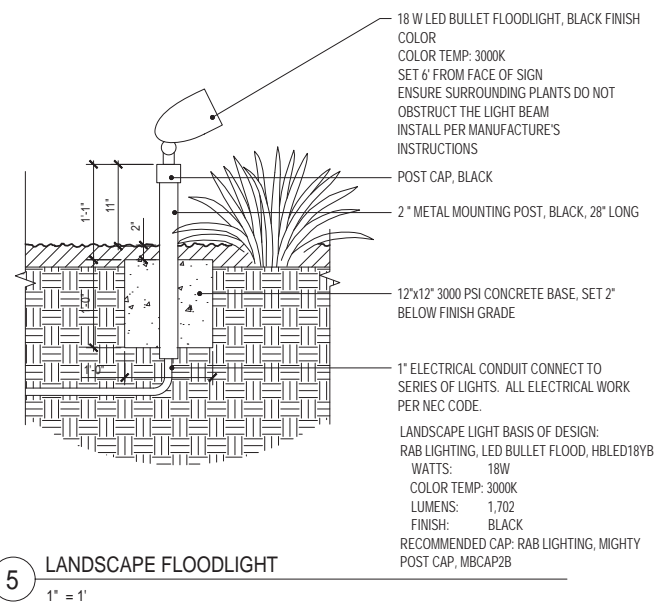


4D GATEWAY SIGN - SECTION D
 $\frac{1}{2}'' = 1'$



BASIS OF DESIGN FOR COLONIAL HEIGHTS GATEWAY SIGN

NOTE:
 CONTRACTOR TO SUBMIT SHOP DRAWINGS OF GATEWAY SIGN TO CITY FOR APPROVAL PRIOR TO CONSTRUCTION



5 LANDSCAPE FLOODLIGHT
 $1'' = 1'$

Project Title
Colonial Heights
Gateway Roundabout
 Colonial Heights
 Virginia



No.	Revision	Date

Drawn by TAC Checked by WRM
 Scale: Varies Date: Aug. 30, 2017
 Issued for: 100%

Drawing Title

Details

Drawing Number

L501

Project Number